

MECO VISIONS

Engineering and consulting services

Visions 3



30 inch diameter filter screen



Hoisting filter screen into place

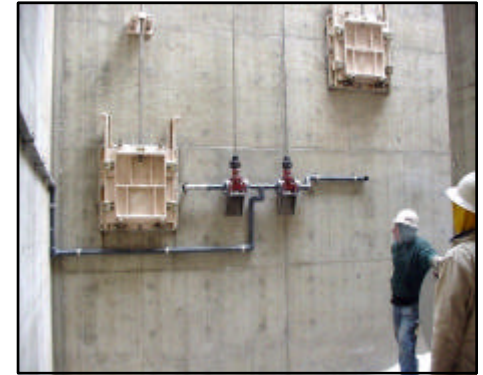


Filter screen bolted in place



River water being let into the Intake

This structure is a raw water intake built for the City of Hannibal, MO. by Bleigh Construction. This intake is constructed within the Mississippi River and utilizes a fine screen to filter out debris. A special chemical feed system is utilized to eliminate the ZEBRA Mussel problem and enhance treatment of the water at the plant.



River gates and chemical feed system



Opening the sluice gate

Bleigh Construction is the contractor



Chemical Storage Tank



Chemical Feed Equipment used to feed a chemical polymer to the Intake screen. This polymer is considered a molluscicide which discourages the Zebra mussel from becoming a nuisance while enhancing the settling characteristics of the water at the

This copy of the **VISIONS** features the construction activities recently completed for :

**Hannibal Board of Public Works
RAW WATER INTAKE**

We thought you would like to take a look



Filter screen hoisted into intake

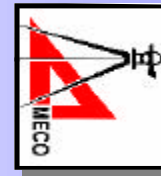
To Contact MECO Engineering

HANNIBAL, MO 3120 Highway W
Hannibal, MO 63401
Telephone 573-221-4048
Fax 573-221-4377
E-mail meco@nemonet.com

JEFFERSON CITY, MO 308 E. High Street
Jefferson City, MO 65102
Telephone 573-893-5558
Fax 573-893-5404
E-mail meco@tranquility.net

JACKSONVILLE, IL 1853 S. Main
Jacksonville, IL 62650
Telephone 217-243-0051
Fax 217-243-0511
E-mail meco@fji.net

WEB address www.mecoengineering.com



Consulting Services
P.O. Box 917
Hannibal, MO 63401

MECO Engineering Co.