

# MECO VISIONS

## Consulting Services



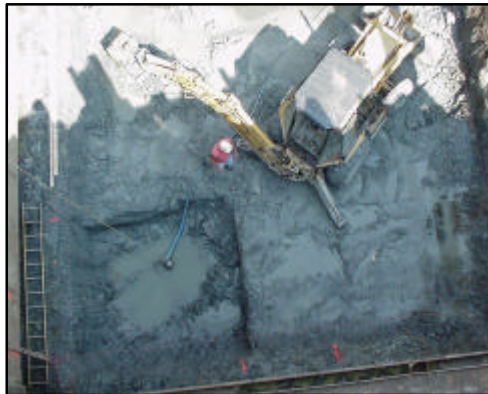
165 cu. yards in the base slab



Sitting on the RR tracks



Major pour in the first lift of the wall



Excavating solid shale 19' below river



Intake Protection Cell



Moving items in and out of coffer dam

## Bleigh Construction - Hannibal



Steel reinforcing 18" walls



Pumping concrete into coffer dam

This copy of the **VISIONS** features the construction activities recently completed for

### Hannibal Board of Public Works RAW WATER INTAKE

We thought you would like to take a look.



Inside the coffer dam Mississippi River

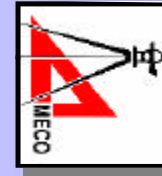
## To Contact MECO Engineering

**HANNIBAL, MO** 3120 Highway W  
Hannibal, MO 63401  
Telephone 573-221-4048  
Fax 573-221-4377  
E-mail [meco@nemonet.com](mailto:meco@nemonet.com)

**JEFFERSON CITY, MO** 308 E. High Street  
Jefferson City, MO 65102  
Telephone 573-893-5558  
Fax 573-893-5404  
E-mail [meco@tranquility.net](mailto:meco@tranquility.net)

**JACKSONVILLE, IL** 1853 S. Main  
Jacksonville, IL 62650  
Telephone 217-243-0051  
Fax 217-243-0511  
E-mail [meco@fji.net](mailto:meco@fji.net)

**WEB address** [www.mecoengineering.com](http://www.mecoengineering.com)



**MECO Engineering Co.**  
**Consulting Services**  
P.O. Box 917 Hannibal, MO. 63401